

PARCEL NUMBERS INCLUDED ON 2021 PERMIT AND MAP INDICATING PARCEL LOCATIONS OF THOSE PARCELS

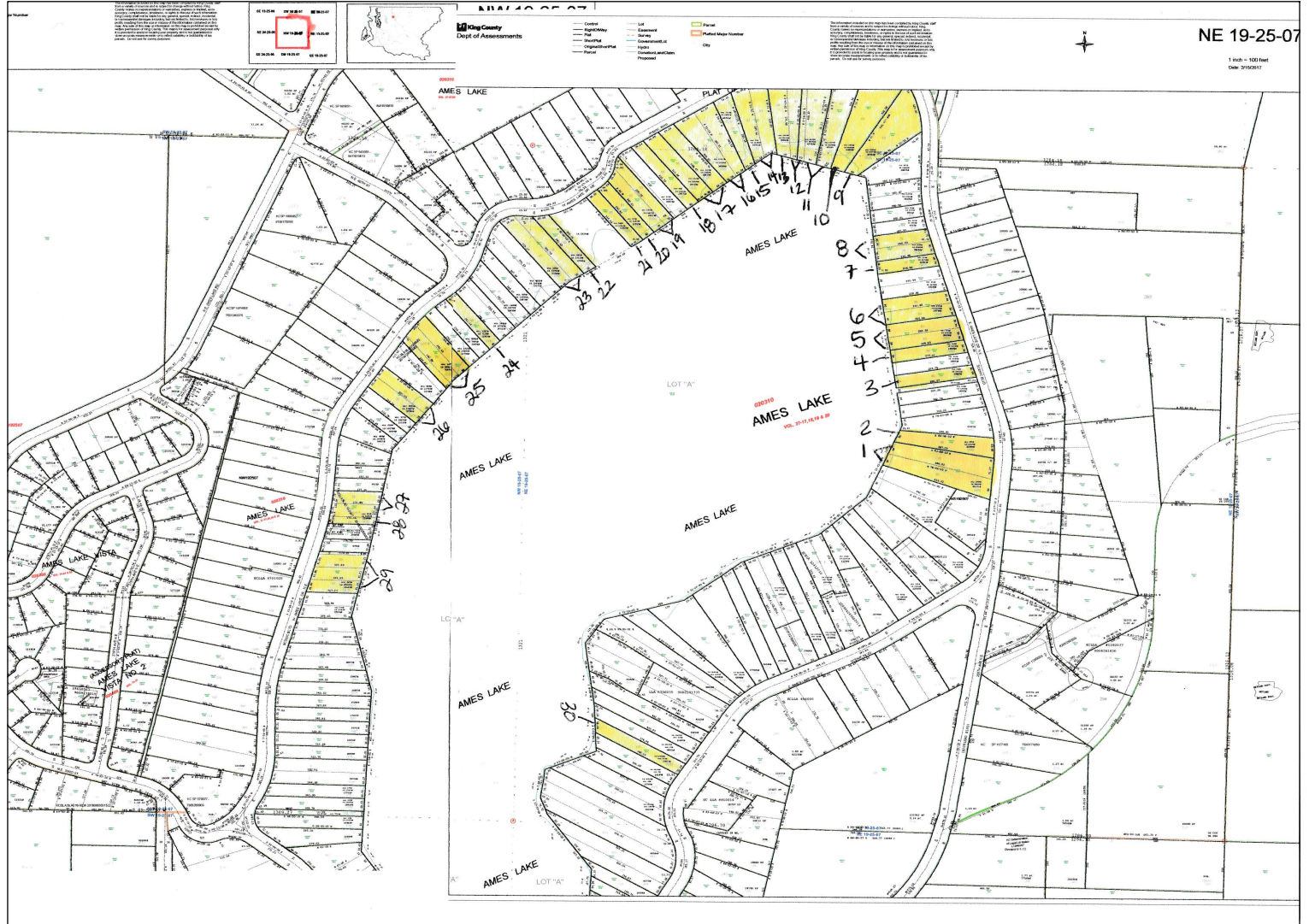
203100495
 020310-0491
 020310-0470
 020310-0460
 020310-0450
 020310-0450
 020310-0425
 020310-0420
 020310-0380
 020310-0377
 020310-0375
 020310-0370
 020110-0360
 020310-0350
 020310-0340
 020310-0330


020310-0320 and
 020310-0325

020310-0310
 020310-0300
 020310-0295
 020310-0290
 020310-0285
 020310-0280
 020310-0240
 020310-0220
 020310-0200
 2031001500

020310-0165 and
 020310-0150

020310-0125
 020310-0635




 INDICATES
 INCLUDED PARCELS
 as of March 24, 2021

BELOW: LIST OF CHEMICALS TO BE USED:

Waterbody Name	Chemical name	Targeted Plants, Algae, or Nutrients
Ames Lake	Glyphosate	Nymphaea spp., Iris spp.
Ames Lake	Sodium carbonate peroxyhydrate	Cyanobacteria/Algae
Ames Lake	Imazamox	Nymphaea spp., Iris spp., Watershield
Ames Lake	Adjuvant(s)	Nymphaea spp., Iris spp., Watershield
Ames Lake	Imazapyr	Nymphaea spp., Iris spp., Watershield